

form

flexibility

details

system

design

sustainability

quality

evolution

expansion

function



Form follows function. That has been the principle of USM Modular Furniture since its inception over 50 years ago. In 1960 Paul Schaerer (Graduate in Engineering and grandson of USM founder Ulrich Schaerer) met the Swiss Architect Fritz Haller for the construction project of the new USM factory buildings and office pavilion. Paul Schaerer discovered in the young architect an ability to fulfill his requirements for a flexible factory building with the vision of a unique, steel modular construction system. In collaboration with Fritz Haller, the new USM factory buildings and office pavilion were planned and realized in Muesingen, Switzerland. Then in 1963 Paul Schaerer and Fritz Haller began creating a furniture system for the new USM office pavilion. The result was a flexible product line that would adapt to the growing business and spatial demands of the company.

Today, USM Haller can be found in offices and homes around the world – and has been acquired for the permanent design collection of The Museum of Modern Art in New York. Fritz Haller later became a Professor of Architecture at a university in Germany, and has been honored many times and awarded with an honorary doctorate degree.

Over the years, USM has extended its product lines to include; USM Kitos and USM Display all based on the original concept of an open system and the ability to respond to changing requirements. With nearly infinite possibilities for modification, USM furniture can meet the needs of the individual user for now and years to come.

USM's state-of-the-art production technologies guarantee the strength and durability of each component. To this day, final assembly is always completed by hand, ensuring exceptional attention to detail and quality. Longevity plays a central role in the entire manufacturing processes proven by the timeless character and reverse compatibility of the USM Modular Furniture system.

Today, with 400 employees and sales partners in over 40 countries, USM continues to grow. The Swiss-based, 4th generation family owned company has achieved a truly global presence. Thanks to high-quality materials, timeless design and modular construction, USM Modular Furniture is revered as a modern design classic.

More information at
www.usm.com

USM Haller

- 6 System
- 8 Components
- 12 Accessories
- 14 Glass
- 16 Measurements
- 33 Colors



USM Haller Table

- 18 System
- 20 Accessories
- 24 Measurements
- 34 Surfaces



USM Kitos Table

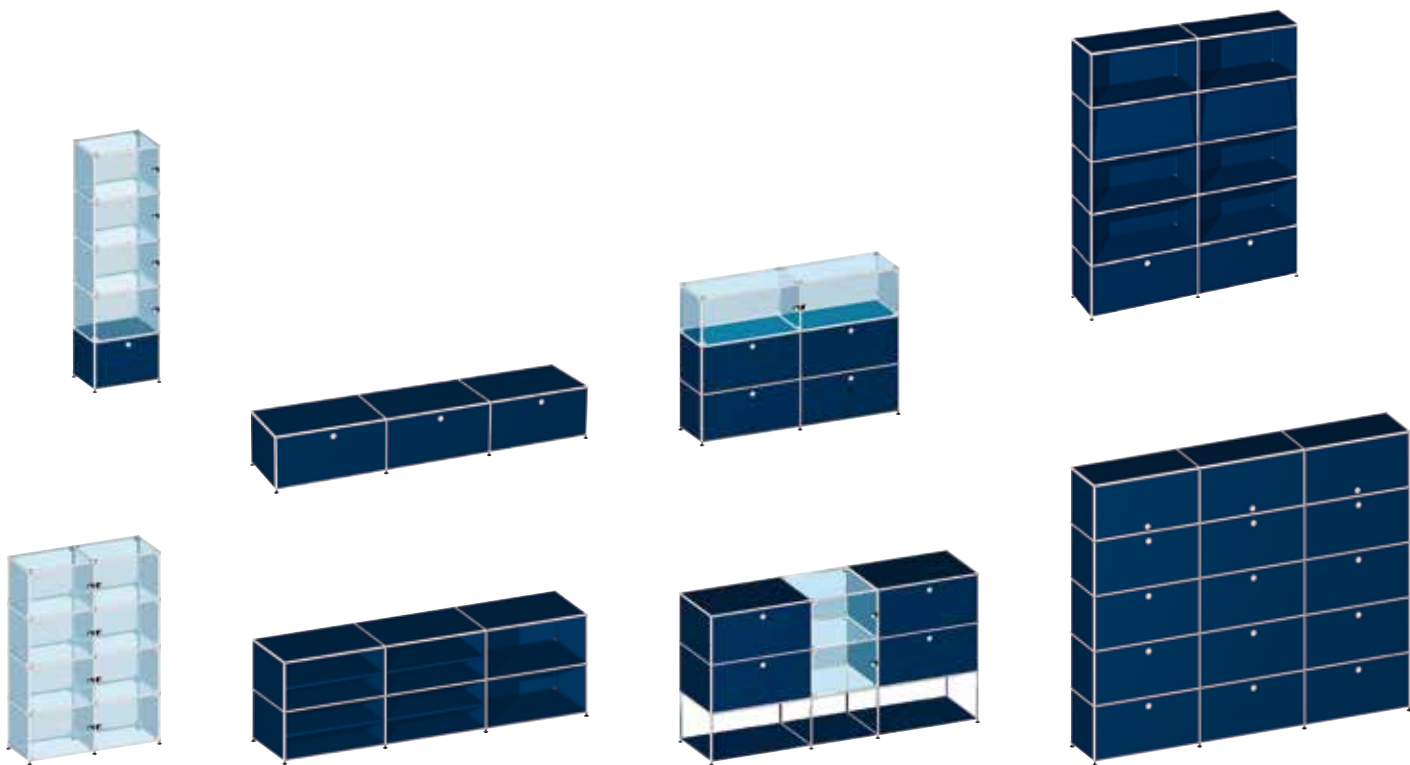
- 26 System
- 28 Accessories
- 32 Measurements
- 34 Surfaces



The basic construction element of USM Modular Furniture Haller is a chrome-plated brass ball joint. Chromed steel tubes connect to the ball to form a stable framework in which the powder-coated metal panels (available in 14 colors) and internal organizational elements are mounted.

Minimalist design with maximum function has made USM Haller a true modern classic, still timeless more than 45 years after it was first introduced. While its basic principles and aesthetics have not changed, accessories are updated continuously to meet current needs and technological advancements, always with the same goal: form and function based on high quality materials and construction precision.





USM Haller

Components

- 1 **Metal panel**
Available in various sizes and 14 standard colors.
Details see pages 16 and 38.
- 2 **Perforated metal panel**
W: 750 / H: 500
W: 500 / H: 500

W: 750 / H: 350
W: 500 / H: 350
W: 395 / H: 350
W: 350 / H: 350

W: 750 / H: 250
W: 500 / H: 250
W: 350 / H: 250
- 3 **Acoustic panel**
Perforated metal panel lined with sound-absorbing fabric.

W: 750 / H: 500
W: 500 / H: 500

W: 750 / H: 350
W: 500 / H: 350
W: 395 / H: 350
W: 350 / H: 350

W: 750 / H: 250
W: 500 / H: 250
W: 350 / H: 250
- 4 **Glass Panel**
Details see page 14.
- 5 **Countertop inset panel**
Available in lacquered glass in 14 standard colors, pearl grey and dark grey plastic laminate.

W: 750 / H: 500
W: 750 / H: 350

W: 500 / H: 500
W: 500 / H: 350

W: 350 / H: 350
- 6 **Glass door**
Handle available with or without lock. Hinges in black or chrome finish.
Details see page 14.
- 7 **Metal drop down door**
Available with pull handle or turning handle with or without locks.*

W: 750 / H: 395
W: 500 / H: 395

W: 750 / H: 350
W: 500 / H: 350
W: 395 / H: 350
W: 350 / H: 350

W: 750 / H: 250
W: 500 / H: 250

W: 750 / H: 175
W: 500 / H: 175

For depths 250, 350 and 500

Available also as acoustic drop down door, lined with sound-absorbing fabric.

W: 750 / H: 350
W: 500 / H: 350
W: 395 / H: 350

W: 750 / H: 250
- 8 **Metal flip up door**
Available with pull handle or turning handle with or without locks.*

W: 750 / H: 350
W: 500 / H: 350

For depths 350 and 500

Available also as acoustic flip up door, lined with sound-absorbing fabric.

W: 750 / H: 350
W: 500 / H: 350

W: 750 / H: 350
W: 500 / H: 350
- 9 **Metal extension door**
Available with pull handle or turning handle with or without locks.*

W: 750 / H: 395
W: 500 / H: 395

W: 750 / H: 350
W: 500 / H: 350
W: 395 / H: 350

W: 750 / H: 250
W: 500 / H: 250

W: 750 / H: 175
W: 500 / H: 175

For depths 350 and 500

Available also as acoustic extension door, lined with sound-absorbing fabric.

W: 750 / H: 350
W: 500 / H: 350

W: 750 / H: 250
- 10 **Drawer**
Available with pull handle or turning handle with or without locks.* Closed or open front.

W: 750 / H: 350
W: 500 / H: 350

W: 750 / H: 250
W: 500 / H: 250

W: 750 / H: 175
W: 500 / H: 175

For depths 350 and 500

Available also as acoustic drawer, lined with sound-absorbing fabric.

W: 750 / H: 350
W: 500 / H: 350

W: 750 / H: 250

* Locking handle also available as an electronic closure (countries of availability upon request).
All measurements in mm.



1



2



3



4



5



6



7



8



9



10



USM Haller

Components

1 Metal divider shelf

Height adjustable.

W: 750 / D: 500

W: 750 / D: 350

W: 750 / D: 250

W: 500 / D: 500

W: 500 / D: 350

2 Glass divider shelf

Height adjustable. Mounts to metal side panels only. Details see page 14.

3 Metal angled shelf

Lifts up for additional storage space behind.

W: 750 / H: 350

W: 500 / H: 350

4 Metal extension shelf

Pulls out with telescopic mechanism.

W: 750 / D: 500

W: 750 / D: 350

W: 500 / D: 500

W: 500 / D: 350

W: 395 / D: 500

W: 395 / D: 350

5 Extension filing set

Mounted on telescopic mechanism. Available with or without front panels. The inserts available in two heights.

W: 750 / D: 500

W: 395 / D: 500

6 Bookshelf panel

W: 750 / D: 350

W: 750 / D: 250

7 Small drawer

Available with or without lock.*

W: 395 / D: 500 / H: min. 100

8 Drawer A6

Available with or without lock.*

W: 395 / D: 500 / H: min. 175

9 Drawer A5

Available with or without lock.*

W: 395 / D: 500 / H: min. 250

10 Drawer A4

Available with or without lock.*

W: 395 / D: 500 / H: min. 350

* Locking handle also available as an electronic closure (countries of availability upon request).

All measurements in mm.



1



2



3



4



5



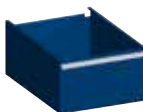
6



7



8



9



10



USM Haller

Accessories

1 USM Inos organizing drawer set

Available in graphite black or light gray. Freestanding or inserted on an extension shelf or in drawers.

2 USM Inos CD tray

Available in graphite black or light gray, freestanding or inserted on an extension shelf or in drawers.

Inserts for 23 CDs
D: 500

Inserts for 14 CDs
D: 350

3 USM Inos DVD tray

Available in graphite black or light gray, freestanding or inserted on an extension shelf or in drawers.

Inserts for 16 DVDs
D: 500

Inserts for 9 DVDs
D: 350

4 USM Inos card-box set

Available in graphite black or light gray, freestanding or inserted on an extension shelf or in drawers.

For drawers A5 or A6
D: 500

For drawers A4, A5 or A6
D: 350

5 USM Inos angled file trays

Available in graphite black or light gray. Inserted on an extension shelf or in drawers.

W: 750 / D: 500

W: 395 / D: 500

W: 750 / D: 350

6 USM hanging file baskets

Inserted on an extension shelf. Letter and legal size filing available.

W: 750 / D: 500

W: 750 / D: 350

7 USM metal box insert

Four-part box inserted in the extension shelves and extension doors with one or two dividers. Available in 14 standard colors. Details see page 69.

W: 750 / D: 500

W: 500 / D: 500

W: 750 / D: 350

W: 500 / D: 350

Door heights 175, 250 and 350

8 USM Inos box set C4

Available in graphite black or light gray. Freestanding or inserted on a shelf.

5 drawer box set open or closed front.

10 drawer box set open or closed front.

9 Bookends for metal panels

a Metal magnetic bookend in graphite black and light gray.

b Metal rail mounted to side panels with adjustable book-end frames.

10 Bookend for bookshelf panel

Metal sliding bookend in graphite black or light gray to be combined with the bookshelf panel.

11 Perforated metal waste basket

Available in graphite black and light gray.

Ø: 302 / H: 400

Available with a black plastic divider for recyclables.

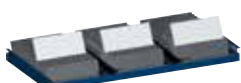
All measurements in mm.



1



2



3



4



5



6



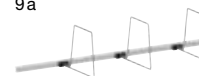
7



8



9a



9b



10



11



USM Haller

Glass

1 Glass panel

Corner brackets available in black or chrome.

W: 750 / H: 500

W: 500 / H: 500

W: 395 / H: 500

W: 750 / H: 350

W: 500 / H: 350

W: 395 / H: 350

W: 350 / H: 350

W: 750 / H: 250

W: 500 / H: 250

W: 395 / H: 250

W: 350 / H: 250

W: 250 / H: 250

2 Glass divider shelf

Height adjustable. Mounts to metal side panels only.

W: 750 / D: 500

W: 500 / D: 500

W: 395 / D: 500

W: 750 / D: 350

W: 500 / D: 350

W: 395 / D: 350

W: 350 / D: 350

W: 750 / D: 250

W: 500 / D: 250

3 Lighting

2 watt LED warm white or cold white bulbs. Casing available in black or chrome.

Up to 15 bulbs per transformer.

W: 500

W: 350

W: 250

4 Glass doors

Designed with single-pane safety glass. Handle with or without lock. Hinges available in black or chrome.

W: 750 / H: 500

W: 500 / H: 500

W: 395 / H: 500

W: 750 / H: 350

W: 500 / H: 350

W: 395 / H: 350

W: 350 / H: 350

W: 750 / H: 250

W: 500 / H: 250

W: 395 / H: 250

W: 350 / H: 250

W: 250 / H: 250

All measurements in mm.



1



2



3



4

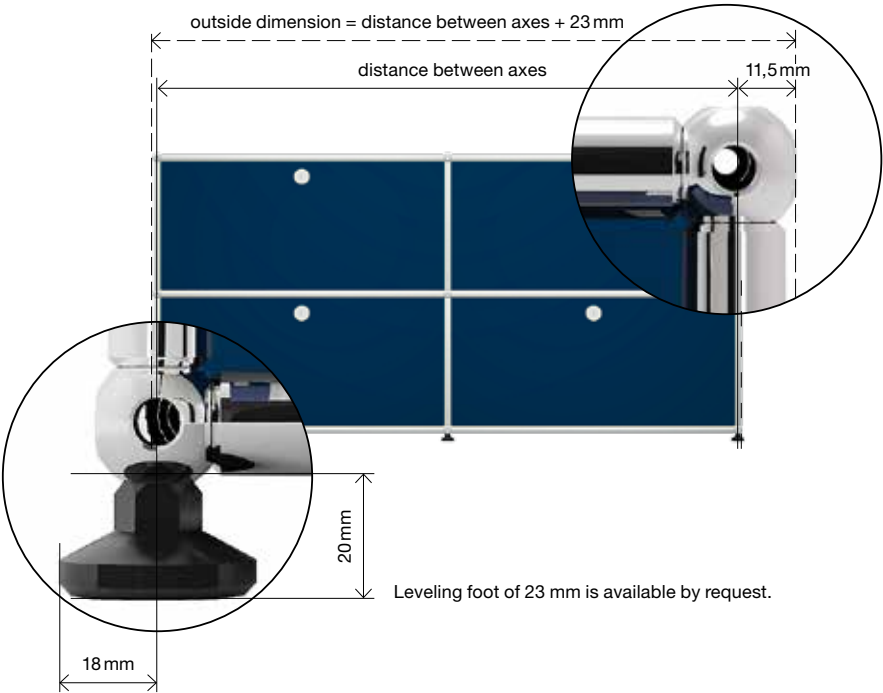




Measurements

USM Haller

The outside dimensions of a USM Haller piece is calculated by adding the support frame to the distance between axes.



The USM Haller system provides a wide variety of elements in standard sizes. Heights, widths and depths are indicated as shown below. All measurements in mm refer to the distance between axes.

H: 100										
H: 150										
H: 175										
H: 200										
H: 250										
H: 275										
H: 350										
H: 395										
H: 500										
H: 750										
	W: 750	W: 500	W: 395	W: 350	W: 275	W: 250	W: 200	W: 175	W: 150	W: 100





USM Haller Table
System

The basis of the extremely stable USM Haller Tables are the chrome legs and frames. The tabletops are available in various standard sizes, shapes and a selection of sixteen surfaces. The USM Haller table can be used for work, conference or dining. The timeless design and durability complement the USM Haller system. Like the furniture system, the table or table combinations can be custom configured with various accessories for optimal efficiency and function.

USM Haller Table

Designed over 45 years ago, the USM Haller Table has become a modern design classic. It harmonizes perfectly with the USM Modular Furniture Haller. Various accessories can be adapted to the table allowing room for further expansion.



USM Haller Table Plus

The USM Haller Table Plus has two removable adaptation points that enable various accessories to be quickly and easily mounted and provide for streamlined cabling. For the cabling solution, the adaptation points are removed, the cables are placed in the guide and the adaptation points are reinserted in the tabletop. An additional cable basket can be attached under the tabletop that bundles all cables together and elegantly conceals them.

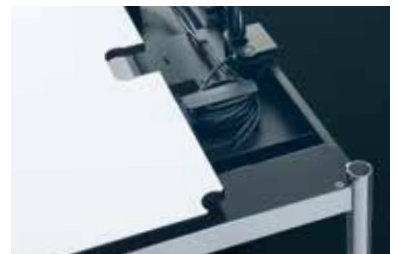


USM Haller Table Access

The USM Haller Table Access is the ideal solution for conference and meeting situations as well as for workplaces in the home. The tabletop slides away to allow access to the integrated cable tray, which offers a generous amount of storage space and attachment options for cabling. For daily access to the most important connections, an additional grommet hatch can also be installed in the table surface.

**USM Haller Table Advanced**

In addition to the permanently attached adaptation points, the Advanced version also offers a sliding top. The tabletop slides forward to allow access to the cable tray, with storage space and attachment options for wiring. Accessories attached to the adaptation points as well as all objects on the table do not have to be removed to access the cable tray.



USM Haller Table

Accessories

1 Universal support
Mounts to the table frame to hold various accessories.

2 Flat screen swing arm
The flat screen panel attaches to a universal plate (VESA standard) on the swing arm. Height-adjustable, rotating and pivoting swing arm.

3 Grommet hatch for network access
Hinged cover integrated into the tabletop for easy network access. You can have it integrated at three different points when placing your order.

4 Cable duct
Holds power strips (8) and cables; the cover can be recessed with two top openings. Table depth increases to the EU norm over 800 mm.

Available in the following table lengths
L: 2000
L: 1750
L: 1500
L: 1250
L: 1000
L: 750

5 Metal privacy panel
Can be attached to the back and the side of the table frame. Can be used to create multiple workstations.

L: 2000 / H: 350
L: 1750 / H: 350
L: 1500 / H: 350
L: 1000 / H: 350
L: 750 / H: 350

6 Cable guide
Clips to the table leg. Directs cables to the power source.

7 Link chain
Holds and directs cables to the power source. Flexible and adjustable to various lengths.

8 Power strip
Can be configured individually for data and power supply according to country-specific requirements. Available with a 4 m cable or a switch. Mounts to the table frame, attached magnetically or placed in a cable duct.

9a CPU holder
(For USM Haller glass and granite tables)
Is clamped to the table frame. For CPUs with max. dimensions of 1400 mm and weighing up to 20 kg.

9b CPU holder
Is screwed to the tabletop. For CPUs with max. dimensions of 1400 mm and weighing up to 20 kg.

10 Front and side panel
A black mesh fabric can be attached to the back or the side under the table frame.

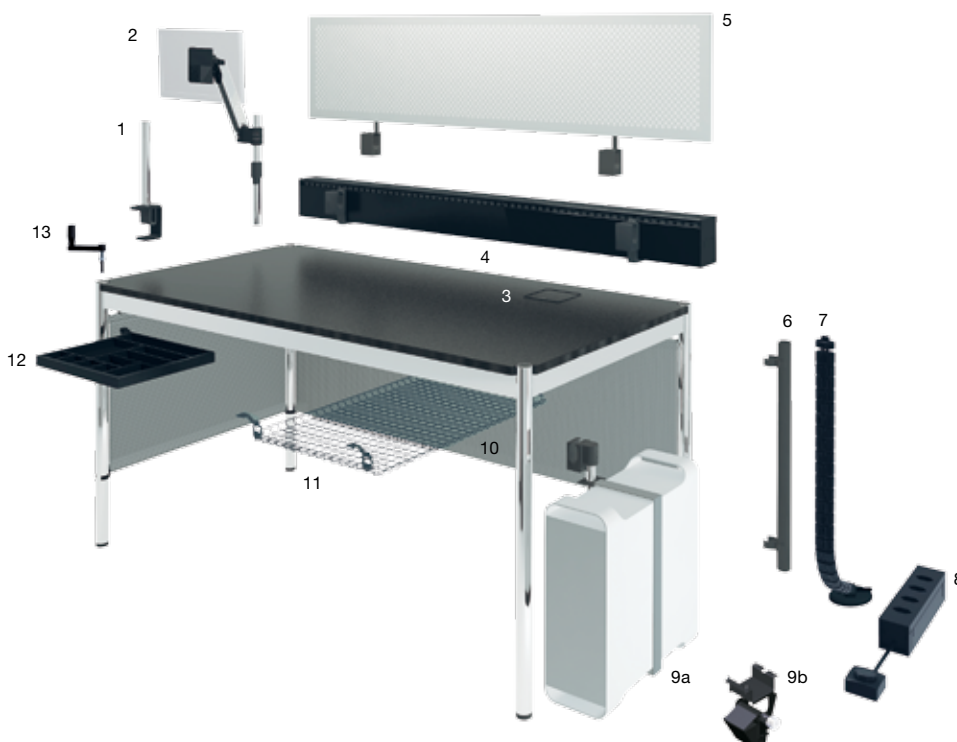
Available in the following table lengths
L: 2000
L: 1750
L: 1500
L: 1250
L: 1000
L: 750

11 Cable wire basket
Mounts to the underside of the work surface.

12 Pivoting pen holder
Provides room for writing instruments and can be discreetly stowed under the table top.

13 Height adjustment
Manual height adjustment with a removable handle.

All measurements in mm.





USM Haller Table
Plus / Access / Advanced
 Accessories

1 Flat screen support

Screens are mounted onto the bracket (VESA standard), which can be connected directly to one of the adaptation points. Swivel-type with a spherical joint for the screen.

Options:

- 1a Mounting at different heights is possible for screens weighing up to 8 kg.*
- 1b Continuous height adjustment for screens weighing up to 12 kg.*

2 Screen bracket

The bracket is inserted into the adaptation points. Up to two screens can be attached using a mounting plate (VESA standard). Screens can be mounted at different heights; screens can be adjusted with ball joints.*

3 Grommet hatch for network access

Flush hinged cover set into the tabletop for easy network access, available in two sizes and can be positioned at three different locations.

4 USB adapter

The adapter is suitable for USB 2.0 and 3.0 ports; it can easily be inserted into the adaptation point. Usable as power supply or for data transfer.*

5 Lamp peg

An optional lamp peg for easy attachment of traditional table lamps. Electrification is possible through the adaptation point.*

6 Metal privacy panels

Can be attached to the long side to ensure individuality and privacy for people working at tables configured as a block station.*

L: 2000 / H: 350

L: 1750 / H: 350

L: 1500 / H: 350

7 Link chain

Holds and directs cables to the power source. Flexible and adjustable to various lengths.

8 Power strip

Can be configured individually for data and power supply according to country-specific requirements. Available with a 4 m cable or a switch. Magnetically attached into the cable duct.

9 CPU holder

Computers in various sizes can be mounted using a simple holding device under the table.

10 Front and side panel

A black mesh fabric can be attached to the back or the side under the table frame.

Available in the following table lengths

L: 2000

L: 1750

L: 1500

L: 1250

L: 1000

L: 750

11 Cable management

For the Access and Advanced table types, a cable tray integrated under the tabletop offers storage room and attachment opportunities for all cables and technical components. For the traditional USM Haller Table and the USM Haller Table Plus, a cable basket can be attached.

12 Pivoting pen holder

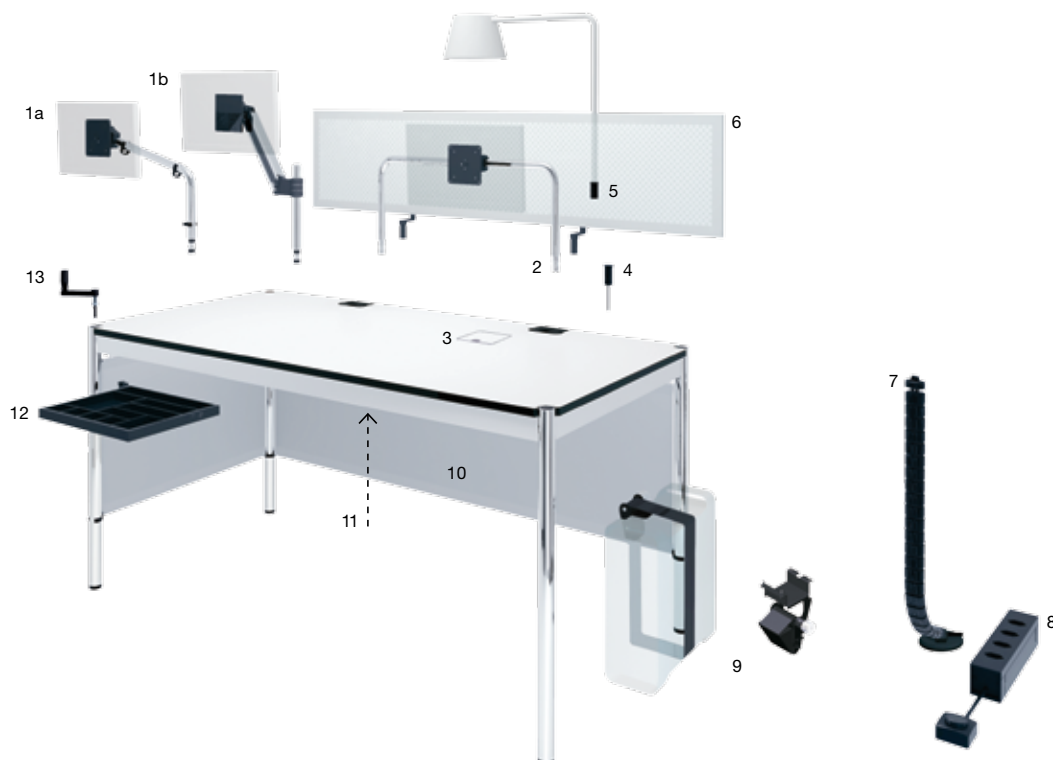
Provides room for writing instruments and can be discreetly stowed under the table top.

13 Height adjustment

Manual height adjustment with a removable handle.

* Suitable for USM Haller Table Plus and Advanced

All measurements in mm.





USM Haller Table

Measurements

1 USM Haller Table Rectangular

Available in all USM Haller tabletop surfaces in the following sizes

L: 2000 / D: 1000 / H: 740
L: 2000 / D: 750 / H: 740
L: 1750 / D: 1000 / H: 740
L: 1750 / D: 750 / H: 740
L: 1500 / D: 1000 / H: 740
L: 1500 / D: 750 / H: 740
L: 1250 / D: 750 / H: 740
L: 1250 / D: 750 / H: 370

Available in the USM Haller tabletop surfaces laminate, MDF, linoleum and wood in the following sizes

L: 3000 / D: 1000 / H: 740
L: 3000 / D: 750 / H: 740
L: 2500 / D: 1000 / H: 740
L: 2500 / D: 750 / H: 740
L: 2250 / D: 1000 / H: 740
L: 2250 / D: 750 / H: 740

Continuous height adjustment
H: 680 to 860

Available in the USM Haller tabletop surfaces laminate, MDF, linoleum and wood in the following sizes

L: 2500 / D: 1000
L: 2500 / D: 750
L: 2250 / D: 1000
L: 2250 / D: 750
L: 2000 / D: 1000
L: 2000 / D: 750
L: 1750 / D: 1000
L: 1750 / D: 750
L: 1500 / D: 1000
L: 1500 / D: 750
L: 1250 / D: 750

2 USM Haller Table Square

Available in all USM Haller tabletop surfaces in the following sizes

L: 1000 / D: 1000 / H: 740
L: 1000 / D: 1000 / H: 370
L: 750 / D: 750 / H: 740
L: 750 / D: 750 / H: 370

3 USM Haller Table Trapezoid

Available in the USM Haller tabletop surfaces laminate, MDF, linoleum and wood in the following sizes

L: 2000/1040 / D: 1000 / H: 740
L: 1750/1040 / D: 750 / H: 740
L: 1750/790 / D: 1000 / H: 740
L: 1500/790 / D: 750 / H: 740

4 USM Haller Table Triangle

Available in the USM Haller tabletop surfaces laminate, MDF, linoleum and wood in the following sizes

L: 1000/1415 / D: 1000 / H: 740
L: 1000/1000 / D: 1000 / H: 740
L: 750/1060 / D: 750 / H: 740
L: 750/750 / D: 750 / H: 740

5 USM Haller Table Plus

Available in the USM Haller tabletop surfaces laminate, MDF, linoleum and wood in the following sizes

L: 3000 / D: 1000 / H: 740
L: 3000 / D: 750 / H: 740
L: 2000 / D: 1000 / H: 740
L: 2000 / D: 750 / H: 740
L: 1750 / D: 1000 / H: 740
L: 1750 / D: 750 / H: 740
L: 1500 / D: 1000 / H: 740
L: 1500 / D: 750 / H: 740
L: 1250 / D: 750 / H: 740

Continuous height adjustment
H: 680 to 860

Available in the USM Haller tabletop surfaces laminate, MDF, linoleum and wood in the following sizes

L: 2000 / D: 1000
L: 2000 / D: 750
L: 1750 / D: 1000
L: 1750 / D: 750
L: 1500 / D: 1000
L: 1500 / D: 750
L: 1250 / D: 750

6 USM Haller Table Access

Available in the USM Haller tabletop surfaces laminate, MDF, linoleum and wood in the following sizes

L: 2000 / D: 1000 / H: 740
L: 2000 / D: 750 / H: 740
L: 1750 / D: 1000 / H: 740
L: 1750 / D: 750 / H: 740
L: 1500 / D: 1000 / H: 740
L: 1500 / D: 750 / H: 740
L: 1250 / D: 750 / H: 740

Continuous height adjustment
H: 680 to 860

Available in the USM Haller tabletop surfaces laminate, MDF, linoleum and wood in the following sizes

L: 2000 / D: 1000
L: 2000 / D: 750
L: 1750 / D: 1000
L: 1750 / D: 750
L: 1500 / D: 1000
L: 1500 / D: 750
L: 1250 / D: 750

7 USM Haller Table Advanced

Available in the USM Haller tabletop surfaces laminate, MDF, linoleum and wood in the following sizes

L: 2000 / D: 1000 / H: 740
L: 2000 / D: 750 / H: 740
L: 1750 / D: 1000 / H: 740
L: 1750 / D: 750 / H: 740
L: 1500 / D: 1000 / H: 740
L: 1500 / D: 750 / H: 740
L: 1250 / D: 750 / H: 740

Continuous height adjustment
H: 680 to 860

Available in the USM Haller tabletop surfaces laminate, MDF, linoleum and wood in the following sizes

L: 2000 / D: 1000
L: 2000 / D: 750
L: 1750 / D: 1000
L: 1750 / D: 750
L: 1500 / D: 1000
L: 1500 / D: 750
L: 1250 / D: 750

All measurements in mm.
USM Haller tabletop surfaces
see page 39.



1



2



3



4



5



6



7



USM Kitos Table
System

USM Kitos is a universal table system that meets the requirements of a high-tech work station. From a simple conference table to a complex workstation, USM Kitos can handle every change – in a language of design that endures in its simplicity, just as it endures with its high-quality materials and solid connection technology.

USM Kitos Table

Specific workplaces are created from pillars, crossbars and support tubes, joined by a lock ring. As a single table, a technical icon, it shows its strengths when joined. Available at a fixed height, with incremental or infinite height adjustment, which can be adjusted electronically. Because the tabletop can be tilted, the USM Kitos Table is the ideal standing desk or lectern.



USM Kitos E

The USM Kitos E table combines sophisticated technology with elegant design. Whether doing work sitting or standing – the optional height adjustability always offers an optimal ergonomic solution. Even at its maximum extended height of 1300 mm, it is extraordinarily stable and easily meets the standards for vibration resistance. It also guarantees the greatest possible and standardized amount of leg and knee room. Barely visible, a cable duct is located below the tabletop. The cable channel can be accessed from the front underneath the tabletop or optionally from above through a hinged cover for network access in the tabletop surface.



USM Kitos E Plus

Up to four accessories can easily be inserted into the adaptation points: flat-screen swing arm, privacy panel, table lamp or USB adaptor. Integrated cable channels route all electrical wires from the tabletop into the tray underneath the tabletop. For easy access to the cables, the tabletop can be lifted and slid forward.



USM Kitos E Advanced

The Kitos E Advanced table has a sliding tabletop that can be easily released, pushed forward and folded down. This allows free access to a large cable tray, in which all power cables and power supply units can be organized and stowed away. The adaptation points integrated into the tabletop permit the user to easily attach up to four expansions: for example, a flat-screen bracket, table privacy panels, lamp peg, USB adapters, etc. A hinged cover integrated into the tabletop for network access for connections used routinely is available upon request.



USM Kitos Table

Accessories

- 1 **Universal support**
Mounts to the table support or directly to the tabletop to hold various accessories.
- 2 **Flat screen swing arm**
The flat screen panel attaches to a universal plate (VESA standard) on the swing arm. Height-adjustable, rotating and pivoting swing arm. This can be mounted onto the tabletop or on the base support using the universal support (1).
- 3 **Cable duct**
Holds power strips (7) and cables; the cover can be recessed with two top openings. Expands the table depth to the EU standard over 800 mm.

Available in the following table lengths
L: 1800
L: 1750
L: 1500
L: 1000
L: 900
- 4 **Base Support**
Metal privacy panels, cable ducts and universal supports can be mounted on the base support.
- 5 **Metal privacy panel**
Attaches to the front of the table support.

L: 1750 / H: 350
L: 1500 / H: 350
- 6 **Link chain**
Holds and directs cables to the power source. Flexible and adjustable to various lengths.
- 7 **Power strip**
Can be configured individually for data and power supply according to country-specific requirements. Available with a 4 m cable or a switch. Mounts to the table frame, attaches to the storage system or placed in a cable duct.
- 8 **CPU holder**
Mounts to the table supports. Height-adjustable and rotating. An adjustable strap ensures a secure fit for most standard CPUs.
- 9 **Cable wire basket**
Mounts to the underside of the work surface.
- 10 **Ergo strip**
Ergonomic attachment expands the work surface from 750 mm to the EU standard over 800 mm.
- 11 **Material tray**
Provides room for writing instruments and can be discreetly stowed under the table top.

All measurements in mm.





1 Flat screen support

Screens are mounted onto the bracket (VESA standard), which can be connected directly to one of the adaptation points. Swivel-type with a spherical joint for the screen.

Options:

1a Mounting at different heights is possible for screens weighing up to 8 kg.*

1b Continuously height-adjustable for screens weighing up to 12 kg.

2 Flat screen support bar

The bracket is connected to the adaptation points and the screens are attached using an attachment panel (VESA standard). Screens can be mounted at different heights and can be adjusted with ball joints.*

3 Grommet hatch for network access

Hinged cover integrated into the tabletop for easy network access. You can have it integrated at three different points when placing your order.

4 USB adapter

The adapter is suitable for USB 2.0 and 3.0 ports. It can be inserted easily into the adaptation point. Usable as power supply or for data transfer.*

5 Lamp peg

An optional lamp peg for easy attachment of traditional table lamps. Electrification is possible through the adaptation point.*

6 Metal privacy panel

Can be attached to the long side to ensure individuality and privacy for people working at tables configured as a block station.*

L: 1750 / H: 350

L: 1500 / H: 350

7 Link chain

Holds and directs cables to the power source. Flexible and adjustable to various lengths.

8 Power strip

Can be configured individually for data and power supply according to country-specific requirements. Available with a 4 m cable or a switch. Magnetically attached into the cable duct.

9 CPU holder

Computers in various sizes can either be mounted using a simple holding device under the height-adjustable tabletop or attached to the table column.

10 Front panel

A black mesh fabric attaches to the front under the table surface.

Available in the following table lengths

L: 1800

L: 1750

L: 1600

L: 1500

11 Cable management

A cable tray integrated under the tabletop offers storage room and attachment opportunities for all cables and technical components.

12 Material tray

Provides room for writing instruments and can be discreetly stowed under the table top.

* Only available for the USM Kitos E Plus and USM Kitos E Advanced.

All measurements in mm.

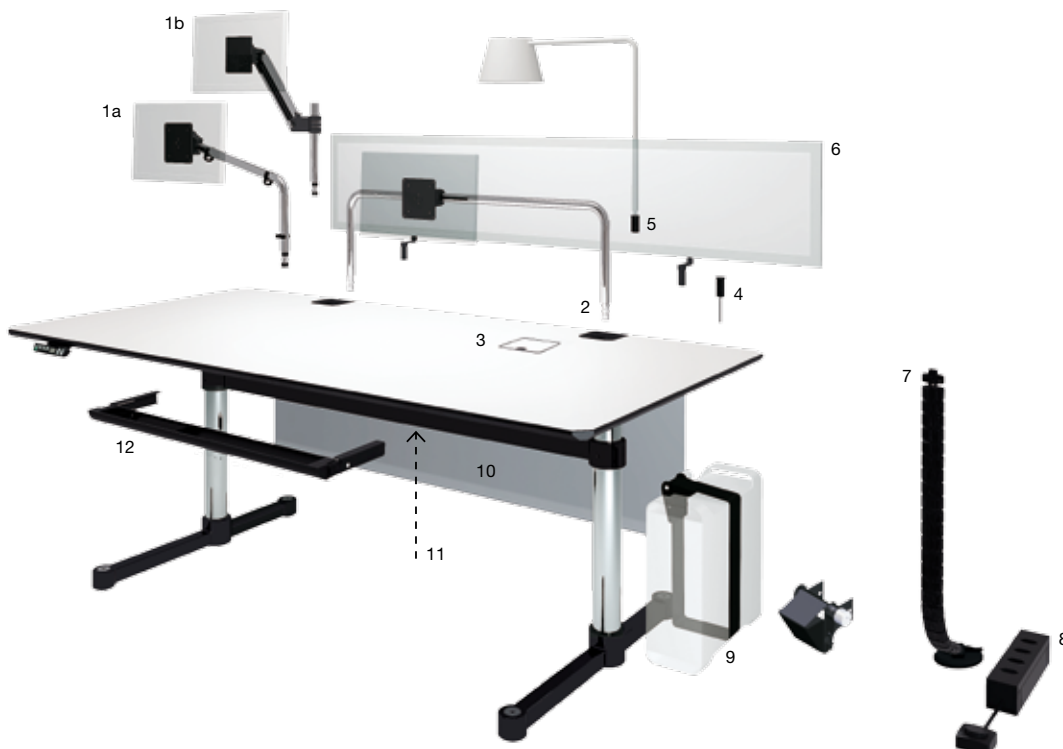


Illustration: USM Kitos E Advanced



USM Kitos Table

Measurements

1 USM Kitos Table Rectangular

Available in all USM Kitos tabletop surfaces in the following sizes

L: 1800 / D: 900
L: 1750 / D: 750
L: 1500 / D: 750
L: 900 / D: 750

Height options:

Fixed
H: 740
Incremental height adjustment
H: 680 to 780 / 1060
Continuous height adjustment
H: 700 to 1200*
Continuous height adjustment
H: 680 to 1300

2 USM Kitos Table Free-standing Square and Round

Available in all USM Kitos tabletop surfaces in the following sizes

L: 900 / D: 900**
L: 750 / D: 750

Ø 1100**
Ø 900

Height options:

Fixed
H: 450 or H: 740
Incremental height adjustment
H: 680 to 780 / 1060
Continuous height adjustment
H: 680 to 1090*

3 USM Kitos Table Hexagon

Available in the USM Kitos tabletop surfaces laminate, MDF, linoleum and wood in the following sizes

L: 900 / D: 792
L: 900 / D: 230
L: 750 / D: 792
L: 750 / D: 336

Height options:

Fixed
H: 740
Incremental height adjustment
H: 680 to 780 / 1060
Continuous height adjustment
H: 700 to 1200*
Continuous height adjustment
H: 680 to 1300

4 USM Kitos E

Available in the USM Kitos tabletop surfaces laminate, MDF, linoleum and wood in the following sizes

L: 1800 / D: 900 (GS certified)
L: 1750 / D: 750
L: 1600 / D: 800 (GS certified)

Height options:

Kitos E1
H: 740
Kitos E2
H: 700 to 1200
Kitos E3 (GS certified)
H: 650 to 1300

5 USM Kitos E Plus

Available in the USM Kitos tabletop surfaces laminate, MDF, linoleum and wood in the following sizes

L: 1800 / D: 900
L: 1750 / D: 750
L: 1600 / D: 800

Height options:

Kitos E1
H: 740
Kitos E2
H: 700 to 1200
Kitos E3
H: 650 to 1300

6 USM Kitos E Advanced

Available in the USM Kitos tabletop surfaces laminate, MDF, linoleum and wood in the following sizes

L: 1800 / D: 900
L: 1750 / D: 750
L: 1600 / D: 800

Height options:

Kitos E1
H: 740
Kitos E2
H: 700 to 1200
Kitos E3
H: 650 to 1300

7 USM Kitos E Free-standing Square and Round

Available in the USM Kitos tabletop surfaces laminate, MDF, linoleum and wood in the following sizes

L: 900 / D: 900
L: 750 / D: 750

Ø 1100
Ø 900

Height options:

Fixed
H: 740
Continuous height adjustment
H: 700 to 1110

* Not available in glass and stone

** Only available with fixed height 740

All measurements in mm.
USM Kitos tabletop surfaces
see page 39.



1

3

6

7



Colors

USM Haller

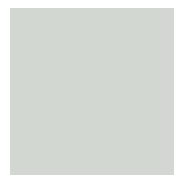
Metal



This thin rolled steel plate comes with a polyurethane powder coating that is available in 14 classic colours. The completely solvent-free powder coating is produced in USM's own production facility in Switzerland.



Pure white
RAL 9010



Light gray
RAL 7035



USM matte silver



Mid-gray
RAL 7005



Anthracite
RAL 7016



Graphite black
RAL 9011



Steel blue
RAL 5011



Gentian blue
RAL 5010



USM green



Golden yellow
RAL 1004



Pure orange
RAL 2004



USM ruby red



USM brown



USM beige

USM Inos accessories are available in graphite black and light gray.

Surfaces & colors

USM Haller Table / USM Kitos Table

Powdercoated MDF



The medium-density fibreboard (MDF) is made of natural materials and comes with a 0,2 mm powder coating which gives it a thorough overall seal. The result is a robust, scratch- and impact-resistant surface. The colours perfectly match the furniture colours.



Pure white
RAL 9010



Light gray
RAL 7035



USM matte silver



Mid-gray
RAL 7005



Anthracite
RAL 7016



Graphite black
RAL 9011

Back lacquered clear glass



The entire underside of the high-gloss table surface is lacquered in one of the 14 USM Haller colours. The extra-white float glass brings out the colours beautifully and powerfully.



Steel blue
RAL 5011



Gentian blue
RAL 5010



USM green



Golden yellow
RAL 1004



Pure orange
RAL 2004



USM ruby red



USM brown



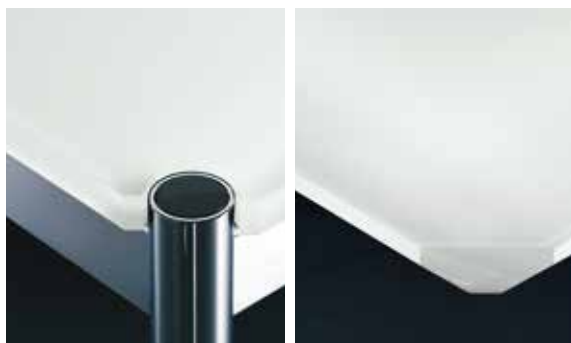
USM beige

The surfaces in glass are available for USM Haller Table (classic) to L: 2000 mm and all USM Kitos tables (classic) with fixed height (H: 740 mm) resp. incremental height adjustment and continuous height adjustment (H: 680 to 1300 mm).

Surfaces & colors

USM Haller Table / USM Kitos Table

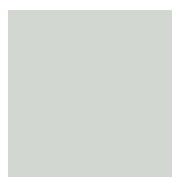
Back lacquered etched glass



These translucent tabletops with their silky sheen are a real eye-catcher. The extra white float glass is given a coat of paint covering the entire underside.



Pure white
RAL 9010



Light gray
RAL 7035



Mid-gray
RAL 7005



Anthracite
RAL 7016

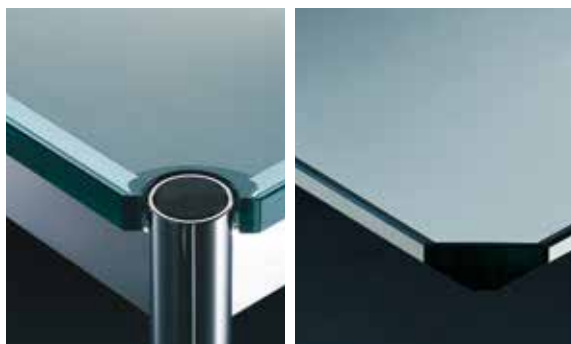


Graphite black
RAL 9011



Steel blue
RAL 5011

Transparent glass



This is a real classic. The solid float glass, made of quartz sand, limestone, dolomite and soda, looks like a thin sheet of ice suspended in the air. Its homogeneous, smooth surface is particularly resistant to all forms of damage.

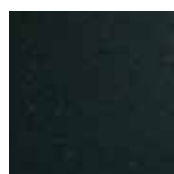


Transparent glass

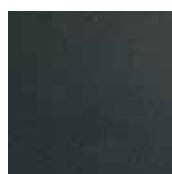
Granite



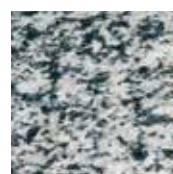
These two types of granite, Serizzo formazza and Nero Assoluto, are medium to fine-grained and available with an impregnated, polished or matte surface. Serizzo formazza has a bright, dynamic look thanks to its pale underground and irregular black inclusions, while Nero Assoluto gives an air of elegance and grace with its fine-grained deep black coloration.



Assoluto Polished
Black granite



Assoluto Matte
Black granite ¹



Serizzo Polished
Grey granite ¹



Serizzo Matte
Grey granite ¹

Linoleum ¹



Linoleum is characterised by an agreeable warm feel thanks to the use of natural components and other sustainable materials such as linseed oil or wood floor. It is also slightly elastic and has antistatic properties that keep it dust-free.



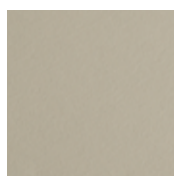
Ash Linoleum ¹



Charcoal Linoleum ¹



Black Linoleum

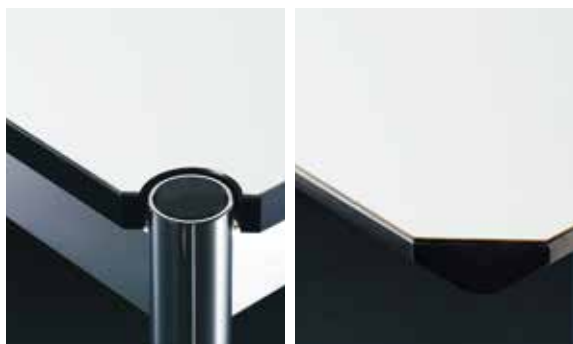


Pebble Linoleum ¹

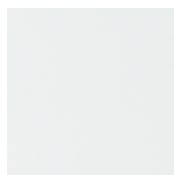


Mauve Linoleum ¹

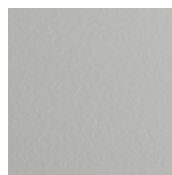
Laminate



Laminate surfaces are extremely resistant to wear, denting and scratching. This type of material is characterised by a black border all the way round the table.



Pearl gray laminate



Pastel gray laminate ¹



Light mid-gray laminate ¹



Dark warm gray laminate ¹

Oiled and lacquered veneer



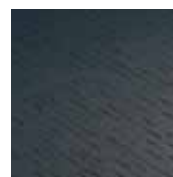
The oiled tabletops look very impressive with their high-quality matt finish. Treatment with natural oil nicely brings out the natural grain of wood. The lacquered tabletops have been treated with a water-based paint giving them a slightly glossy look and making the wood more resistant to knocks.



Natural lacquered oak veneer



Natural lacquered beech veneer



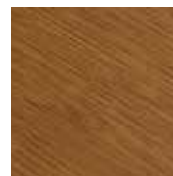
Black lacquered oak veneer



White oiled oak veneer ¹



Natural oiled oak veneer ¹



Brown oiled oak veneer ¹



Natural oiled walnut veneer ¹

¹ Colour designations according to the Forbo Desktop colour range.

The surfaces in glass and granite are available for USM Haller Table (classic) to L: 2000 mm and all USM Kitos tables (classic) with fixed height (H: 740 mm) resp. incremental height adjustment and continuous height adjustment (H: 680 to 1300 mm).

Switzerland:
USM U. Schärer Söhne AG
Thunstrasse 55
CH-3110 Münsingen
Phone +41 31 720 72 72
Fax +41 31 720 72 38
info@ch.usm.com

Germany:
USM U. Schärer Söhne GmbH
Postfach 1653
D-77806 Bühl
Phone +49 72 23 80 94 0
Fax +49 72 23 80 94 199
info@de.usm.com

France:
USM U. Schärer Fils SA
Paris Showroom
23 Rue de Bourgogne
F-75007 Paris
Phone +33 1 53 59 30 30
Fax +33 1 53 59 30 39
info@fr.usm.com

USA:
USM U. Schaerer Sons Inc.
New York Showroom
28 – 30 Greene Street
New York, NY 10013
Phone +1 212 371 1230
Fax +1 212 371 1251
info@us.usm.com

Japan:
USM U. Schaerer Sons K.K.
Tokyo Showroom
Marunouchi MY PLAZA 1 · 2F
2-1-1 Marunouchi, Chiyoda-ku
Tokyo 100-0005
Phone +81 3 5220 2221
Fax +81 3 5220 2277
info@jp.usm.com

All other countries
contact USM Switzerland.

www.usm.com